



Perfect fusion of speed and quality  
that upgrades your coffee business  
and fuels momentum.



**WMF Peak 50**

# Exceptional coffee without complexity.

## WMF Peak 50.

With its user-friendly design, the WMF Peak 50 ensures effortless operation and reliable performance, with a recommended daily output of 80 cups.

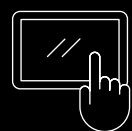


### Professional performance

- Two-boiler system: Ensures fast service and constant temperature, delivering consistent high-quality drinks from the first to the last cup, with less descaling hassle.
- Up to 80 cups per day: Ideal for medium to large-sized venues wanting coffee with good quality output without over-complexity.

### Effortless operation

- 7" touch display: Intuitive interface, clear navigation in both served and self-service environments with pre-saved recipes.
- Patented milk system cleaning: Simplified daily cleaning routine with WMF Click+Clean plus weekly Clean in Place deep-clean program ensures hygiene with minimal effort.



### Beverage variety

- Integrated product hoppers and 2 grinders: Enables a wide range of coffee specialties, tailor-made for varied tastes.
- Optional powder hopper + cold-water admixture: Expand the menu into powder-based drinks and alternative milks, avoiding clumping and maintaining quality.
- Optional configuration: Extend the beverage range to include filter-inspired brews – ideal for those who simply prefer a classic black coffee.



Further  
information  
and downloads:



Further specifications and technical details:



### 7"-touch display

For easy navigation

### Essential Foam system

Hot milk & hot milk foam

### Hot water outlet

Delivers hot water directly through a separate spout

### Fixed spout

With double coffee and single milk outlet

### Click+Clean & Clean in Place

For quick & easy cleaning

### MDB & Telemetry

WMF CoffeeConnect as an option

### Filter-inspired brews

As an option (available with two grinders)

### Two-boiler concept

Less descaling hassle, fast serving

### Hot Americano function

Espresso + hot water bypass  
Optional cold americano function

### 4 liter tank

And fixed water option



\* Image may contain/show additional options

**For places where every coffee  
becomes a memory.**



### **Medium to large offices and workplaces**

The WMF Peak 50 delivers premium coffee for up to 80 cups a day, turning everyday breaks and meetings into moments of inspiration. Quiet and efficient, it fits seamlessly into office environments, allowing conversations and work to flow in an uninterrupted way while providing consistently high-quality beverages.



### **Small hotels and B&Bs**

The WMF Peak 50 combines intuitive operation with quick, efficient service, making it ideal for small hotels and B&Bs. Guests enjoy premium coffee without delay, whether served by staff or via easy self-service – ensuring a welcoming and satisfying experience every time.



## C-stores and small tea shops

With its user-friendly interface, the WMF Peak 50 ensures quick and seamless beverage service, helping small shops and convenience stores stand out. Consistently high-quality coffee and tea delights customers, while smooth operation keeps service efficient and enjoyable.



## Waiting and reception zones

The WMF Peak 50 turns every waiting moment into a premium coffee experience. Quick to serve and easy to operate, it offers consistently high-quality beverages, creating a welcoming atmosphere and leaving a lasting impression on guests and clients alike.

# Consistent performance meets professional versatility. Discover the new features of the WMF Peak 50.



## 7" horizontal touch display

It offers an intuitive, user-friendly interface that makes navigation effortless. Whether in a served or self-service environment, the clear menu guides users step by step, turning beverage selection into an enjoyable experience.



## Integrated bean hoppers

The WMF Peak 50 features two hoppers for beans or toppings and one or two quiet grinders. This ensures effortless preparation of a wide range of coffee specialties – tailored to every taste.



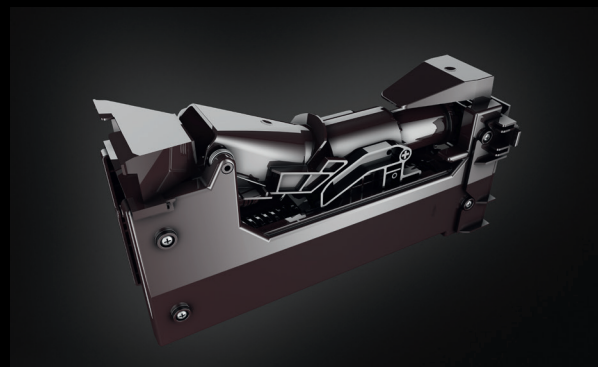
## Click+Clean and Clean in Place

The WMF Peak 50 keeps cleaning simple and efficient: the Click+Clean function streamlines your daily routine, while the Clean in Place program provides an automated deep clean once a week.



## Two-boiler system

The WMF Peak 50 ensures quick beverage preparation with consistently high coffee quality. The two boilers provide a larger volume of hot water and steam at a stable temperature – enabling fast, efficient service and premium results, every time.



## 16 g / 24 g brewer

The WMF Peak 50 delivers excellent coffee quality with durable, professional components. With 16 g and 24 g brewers, it offers flexibility for different beverage sizes and preferences.



## WMF CoffeeConnect available as an option.

The WMF Peak 50 is digital-ready. Our telemetry solution connects your machines, provides insights into machine data and optimizes processes. This allows you to improve the customer experience and implement completely new business models.

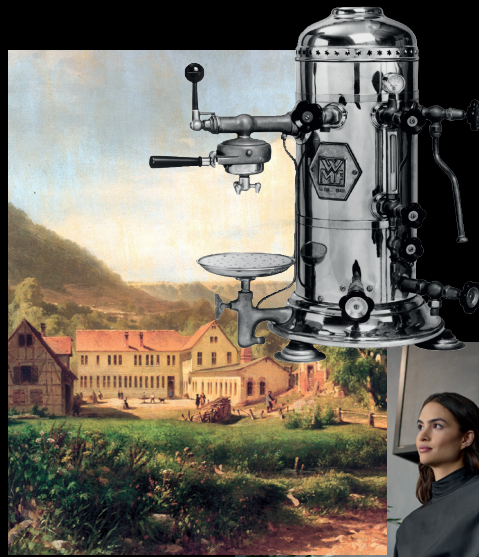
For more information, visit [www.wmf-coffeeconnect.com](http://www.wmf-coffeeconnect.com).



We are making history – every day. The development of our coffee machines began back in 1927, the year in which we manufactured our first professional coffee machine. Since then, we have been continuously learning from our customers, in order to create the best coffee experience for you.

### Tradition

Our long tradition of German engineering, craftsmanship and attention to detail is still evident today. We stand for the production of excellent coffee machines, comprehensive service and first-class coffee.



### Quality

Design, product development, first-class materials, cutting-edge technology – our high quality standards have brought us to where we are today. They ensure that every machine offers a long service life and outstanding performance.



### Innovation

We are constantly setting new standards and developing innovative solutions to help you optimize your coffee business.



### Service

From installation and maintenance to repairs: Our outstanding service solutions are designed to keep your machines up to date with the latest technology throughout their entire service life. We make sure your coffee machine works reliably and delivers excellent coffee.

# Technical Data



325 mm



561 mm



473 mm

## WMF Peak 50

Power connection / Nominal power output	220-240 V, 50/60 Hz (1/N/PE) / 1.9 - 2.3 kW
Recommended daily / max. hourly output*	80 cups per day
External dimensions (width, height, depth)	325 / 473 / (555 mm with hopper extension) 561 mm (incl. power cord)
Water supply	4l water tank / constant water supply
Net weight	Approx. 24-28 kg
Capacity of bean hopper	~ 550 g / ~ 1100 g with extension
Capacity of powder hopper	~ 450 g / ~ 1250 g with extension
Double powder hopper	~ 590 g / chamber

\* Performance was determined using a machine with a fixed water connection and depends on the size of the cup.

This is an average value for your reference.

Get in touch now and  
let's take the next steps together.

### How to reach us:

professional-coffeemachines@wmf-group.com  
www.wmf-coffeemachines.com



Alternatively, you can simply use the contact form via the QR code

WMF GmbH • WMF Platz 1 • 73312 Geislingen/Steige

Art. Nr. 63.8640.0391

DESIGNED TO PERFORM

[wmf-coffeemachines.com](http://wmf-coffeemachines.com)